

PART OF THE NE 1/4 OF SEC. 34, T.7N., R.1W., S.L.B. & M.  
HERITAGE GROVE SUBDIVISION – PHASE 3

176

IN NORTH OGDEN CITY

TAXING UNIT: 10

SCALE 1" = 50'

SEE PAGE 84

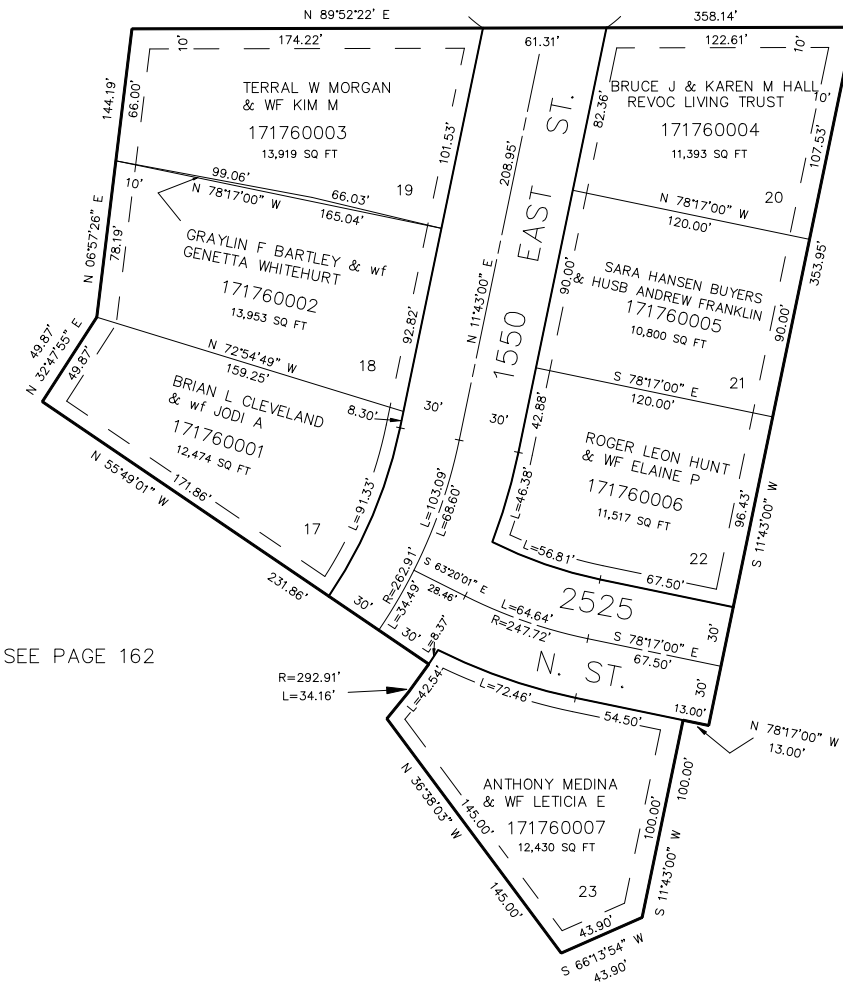
SEE PAGE 84

TEMP. CUL-DE-SAC  
R=55'

SEE PAGE 84

SEE PAGE 84

SEE PAGE 162



7' UTILITY & DRAINAGE EASEMENTS EACH  
SIDE OF PROPERTY LINES AS INDICATED  
BY DASHED LINES EXCEPT AS OTHERWISE  
SHOWN.

FOR COMPLETE ENG DATA SEE  
ORIGINAL DEDICATION PLAT IN  
BOOK 33, PAGE 18 OF RECORDS.

\*FOR TAX PURPOSES ONLY\*

KST 4-91